

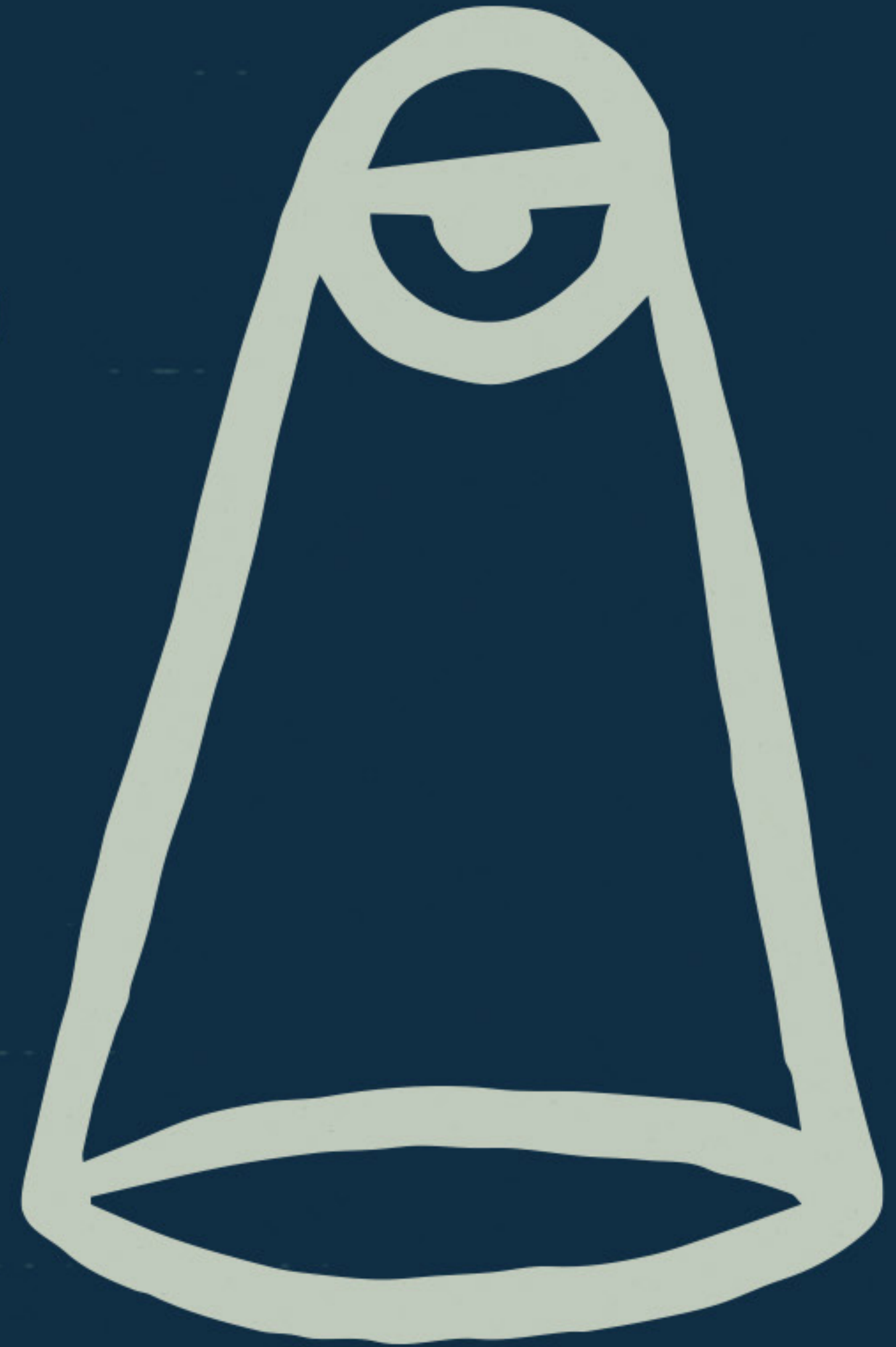
# THE SPOTLIGHT

Los Angeles' newest nightclub brought to you by Team Framework. Nestled in the heart of Hollywood, right next to the Dream Hotel, this 300-capacity venue is set to redefine the nightlife experience by fostering a creative hub for all things music, art, and fashion.

Imagine a speakeasy and lounge ambiance fusion, paired with a comprehensive mixology program, all meticulously pieced together to create a vibrant atmosphere with elegance and sophistication.

🌐 [thespotlight.la](https://thespotlight.la)

📷 [@spotlight.la](https://www.instagram.com/spotlight.la)

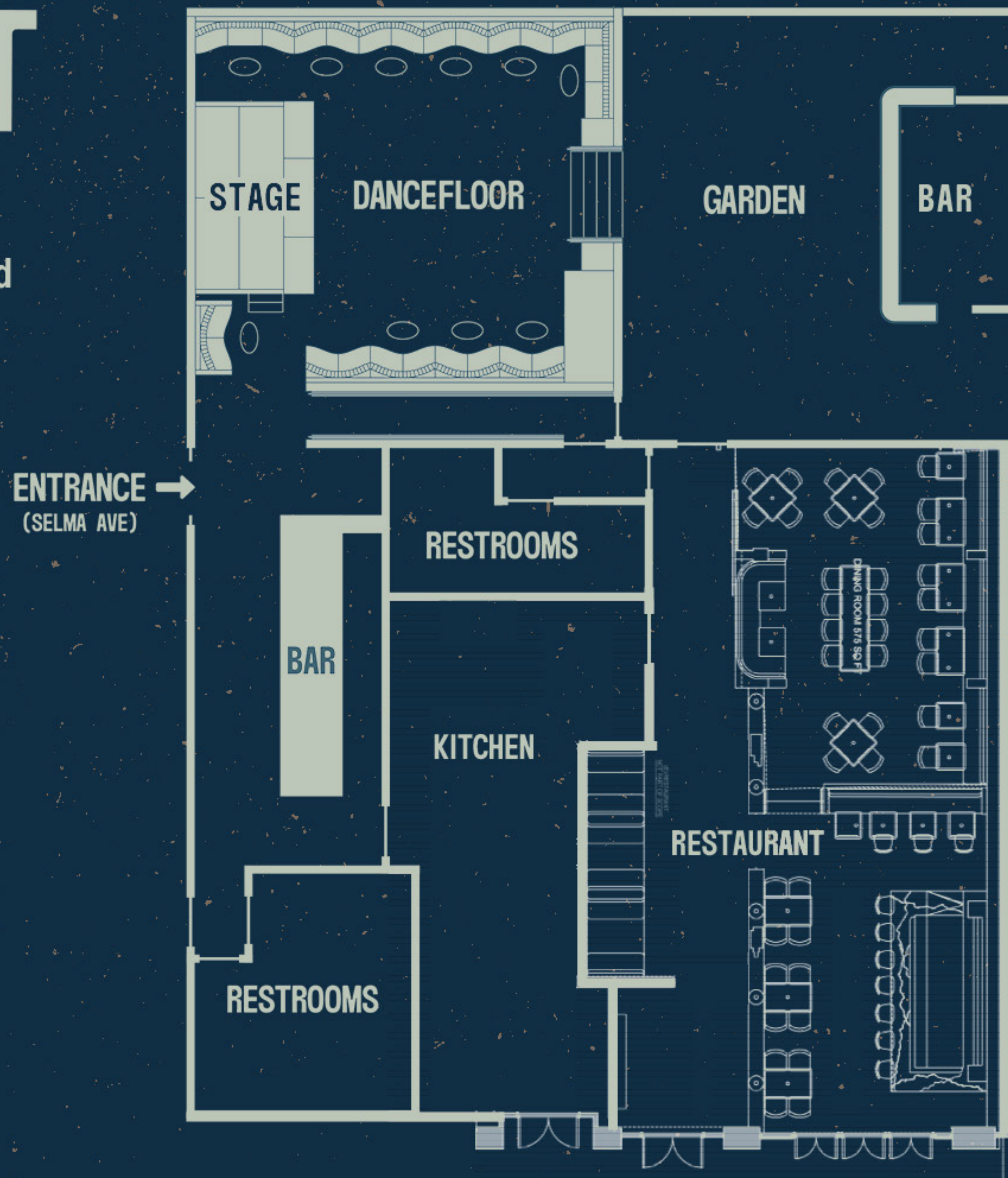




# VENUE LAYOUT

The Spotlight offers 5000 sq feet of flexible event space including a main lounge, garden and restaurant. The venue can be utilized as three unique experiences or seamlessly combined to create one indoor/outdoor venue for up to 400 people.

- 3 Full Service Bars
- State of the Art Sound and Lighting system
- DJ Booth and Equipment
- 8' x 16' Stage
- In-House Catering
- Garden Retractable Rooftop
- Valet Parking
- Reception Capacity 50 to 400
- Seated Capacity 30 to 100













# VENUE SPECIFICATIONS

## SOUND

Custom L-Acoustics

## DJ EQUIPMENT

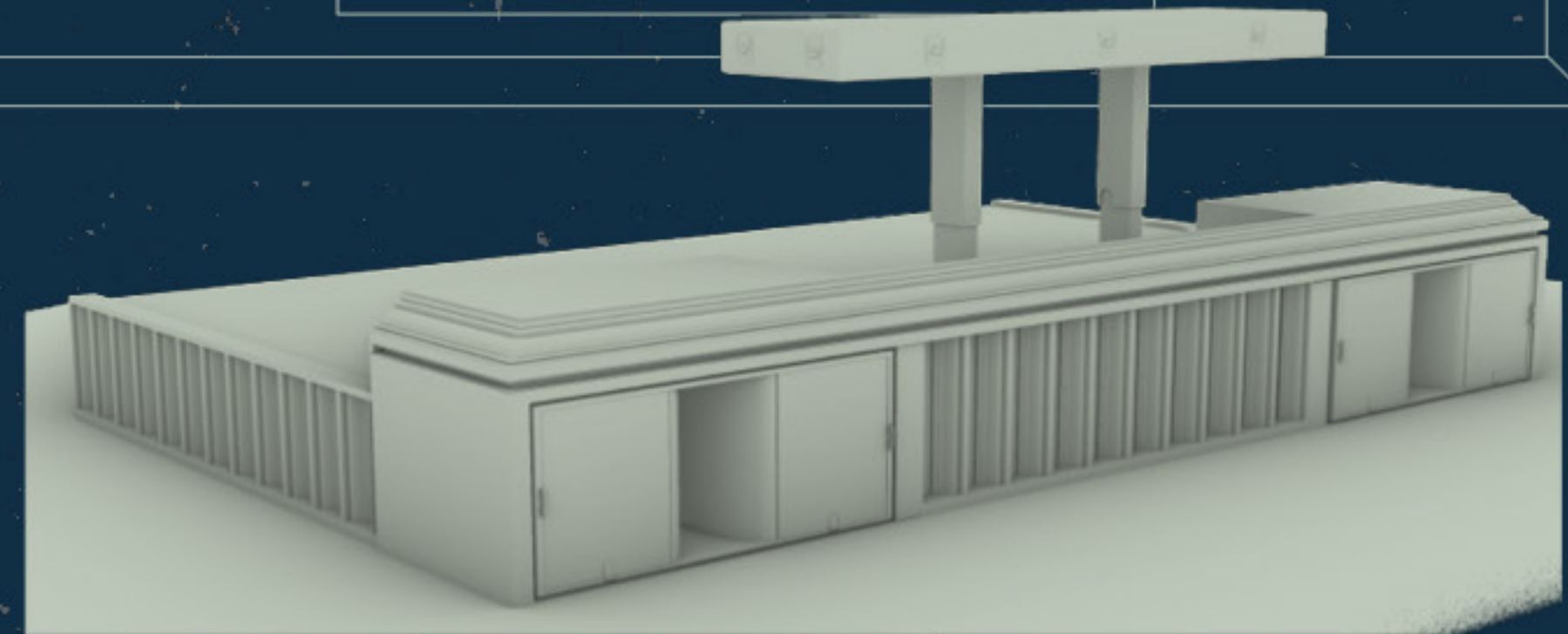
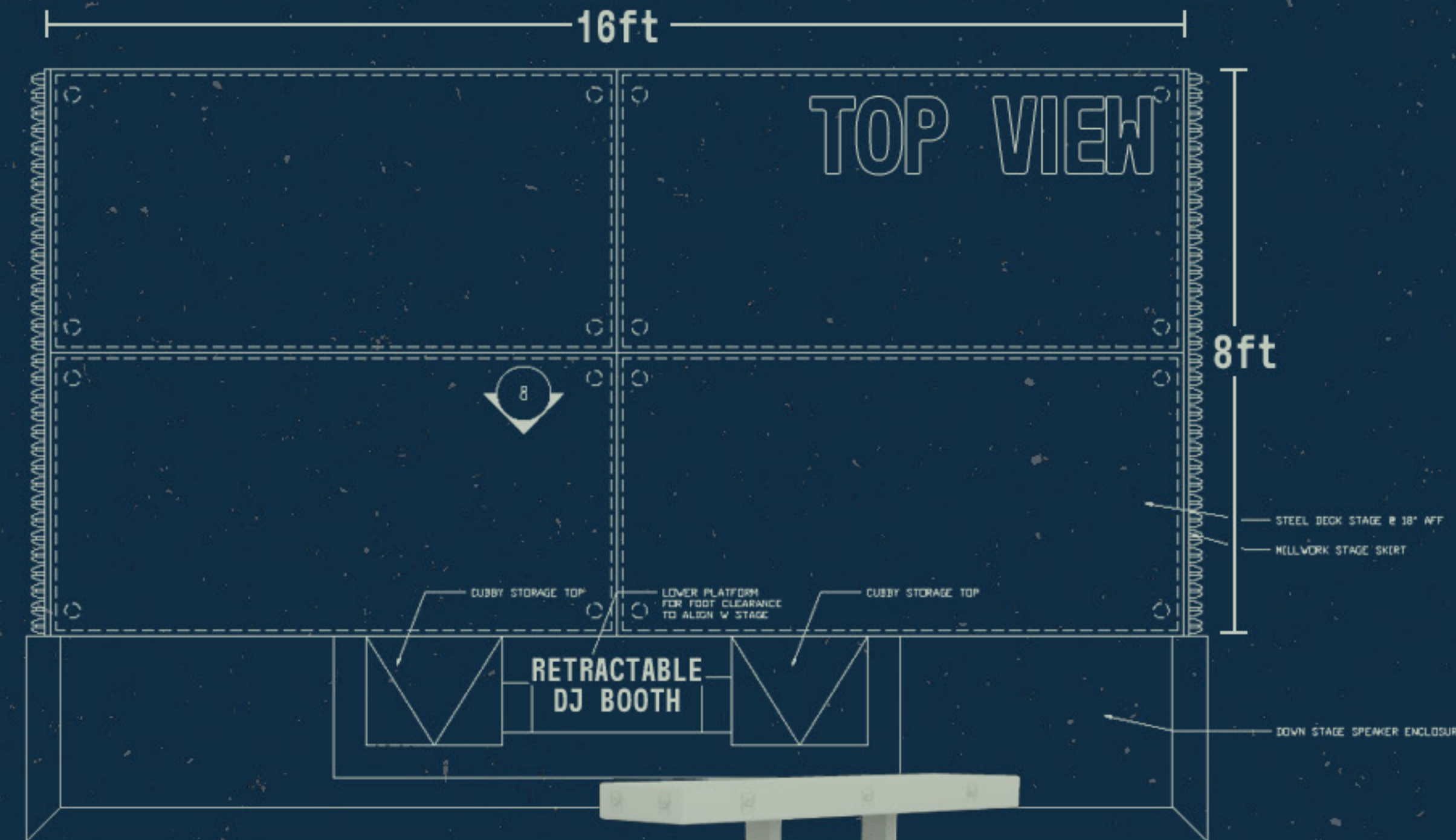
4x Pioneer DJ-3000  
1x Pioneer DJM-V10 6 Channel Mixer

## STAGE

Accommodates a 4-Piece Band  
DJ Booth on Hydraulics Built Into Stage

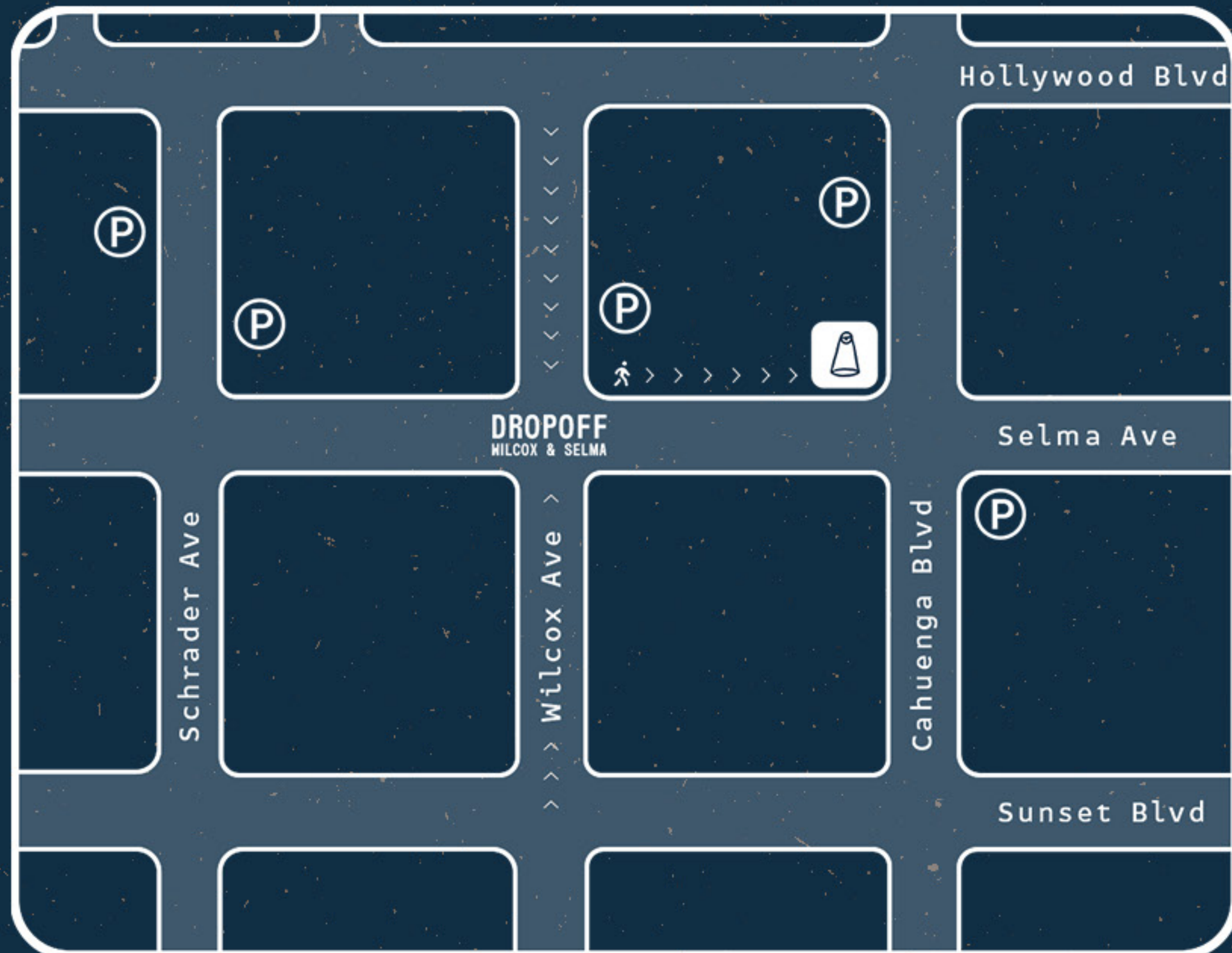
## VFX

Midas Sound Board  
MA Lighting Board





# PARKING INFO



There are 3 parking lots that we recommend going northbound from Selma on Wilcox Ave between Hollywood Boulevard and Selma Avenue, and one parking lot going southbound on Cahuenga Boulevard directly off of Hollywood Boulevard.

Valet Parking is available in front of the venue on Selma Ave.

